

TWENTY-NINE INDIAN CREEK

A Collection of Luxury Residences Coming to the Faena District

2901 INDIAN CREEK DRIVE

INTRODUCING TWENTY-NINE INDIAN CREEK

A new residential community is in development in Miami Beach's Faena District. The revolutionary neighborhood has experienced significant investment and activity spearheaded by Faena, the inimitable luxury lifestyle brand. The buzzing arts and culture enclave has recently welcomed the Faena Theatre, Faena Forum, Faena House and the future Aman residences.

Now, JMH Development makes its mark in the Faena District with a new boutique development offering 11 distinct residences in this cultural epicenter.

An aerial photograph of Miami Beach, Florida, showing a dense urban landscape with various high-rise buildings and a river. A white, cloud-shaped callout box with the number '29' inside is positioned in the upper right quadrant. A dashed white line extends from the bottom of the callout box down to a specific location on the riverbank in the city.

29

TWENTY-NINE INDIAN CREEK

MIAMI BEACH

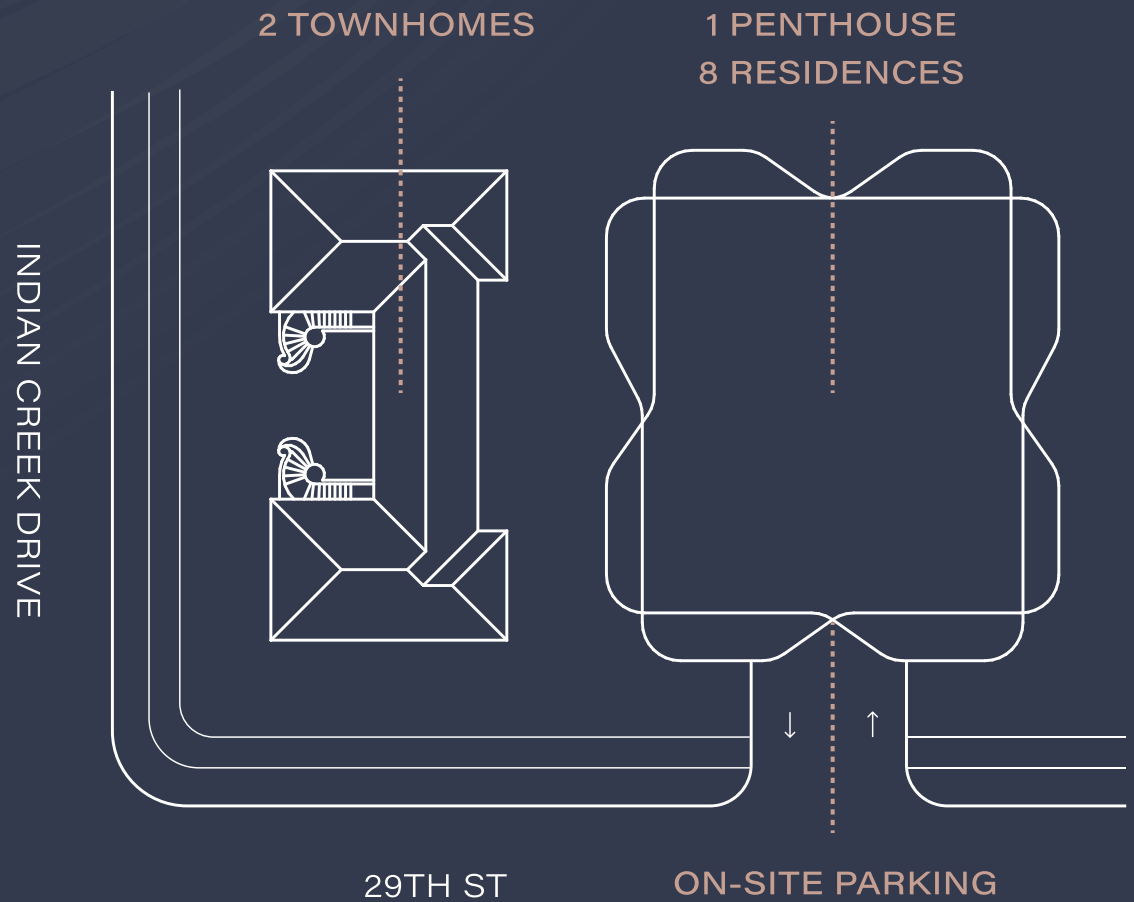
1. Twenty-Nine Indian Creek
2. Faena Hotel
3. Faena Forum
4. Faena House
5. Aman Miami Beach
6. Soho Beach House
7. FontaineBleau Miami Beach
8. The Miami Beach EDITION
9. The 1 Hotel South Beach
10. W South Beach
11. The Setai Miami Beach
12. Bvlgari Hotel Miami
13. The Raleigh

DESTINATIONS

- 5 min Lincoln Road
- 7 min Sunset Harbor
- 12 min Design District
- 15 min Wynwood
- 18 min Miami International Airport
- 20 min Bal Harbour
- 25 min Brickell / Downtown



THE PROJECT



11 BOUTIQUE RESIDENCES CURATED BY JMH DEVELOPMENT

Located at 2901 Indian Creek Drive, Twenty-Nine Indian Creek is a luxury collection of 11 private residences curated by JMH Development.

Converging old and new, Twenty-Nine Indian Creek blends early 20th century style with modern influences, mirroring the duality of the architectural languages spoken on Indian Creek Drive and Collins Avenue.

The modern, seven-story tower will offer eight three-bedroom residences and one full-floor penthouse, in addition to two townhomes that will be part of an extensive restoration of a 1930s Art Deco building located on the site.



1 PENTHOUSE

8 RESIDENCES

2 TOWNHOMES

TWENTY-NINE
INDIAN CREEK



EXTERIOR VIEW ALONG INDIAN CREEK DRIVE LOOKING EAST

JMH Development will restore and relocate the historic 1930's townhome to be harmonious with the new building and the surrounding neighborhood, paying homage to the inherent design qualities of its former era.

Sketches and illustrations are artist's renderings. Details and field variations are subject to change.

TWENTY-NINE
INDIAN CREEK



BUILDING ENTRY ALONG 29TH STREET LOOKING EAST

Sketches and illustrations are artist's renderings. Details and field variations are subject to change.

TWENTY-NINE
INDIAN CREEK



POOL DECK

TWENTY-NINE
INDIAN CREEK

THE RESIDENCES

1 PENTHOUSE

8 RESIDENCES

Floors 3 - 6

2 TOWNHOMES

TWENTY-NINE
INDIAN CREEK



3 BEDROOM / 3.5 BATHROOM | 2,301 SQUARE FOOT RESIDENCE

Urban Robot and JMH carefully considered the use of materials for each residence with nature, culture, and environment at the forefront.

TWENTY-NINE
INDIAN CREEK



KITCHEN

TWENTY-NINE
INDIAN CREEK



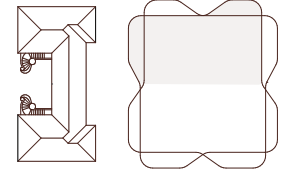
PRIMARY BATHROOM

Sketches and illustrations are artist's renderings. Details and field variations are subject to change.

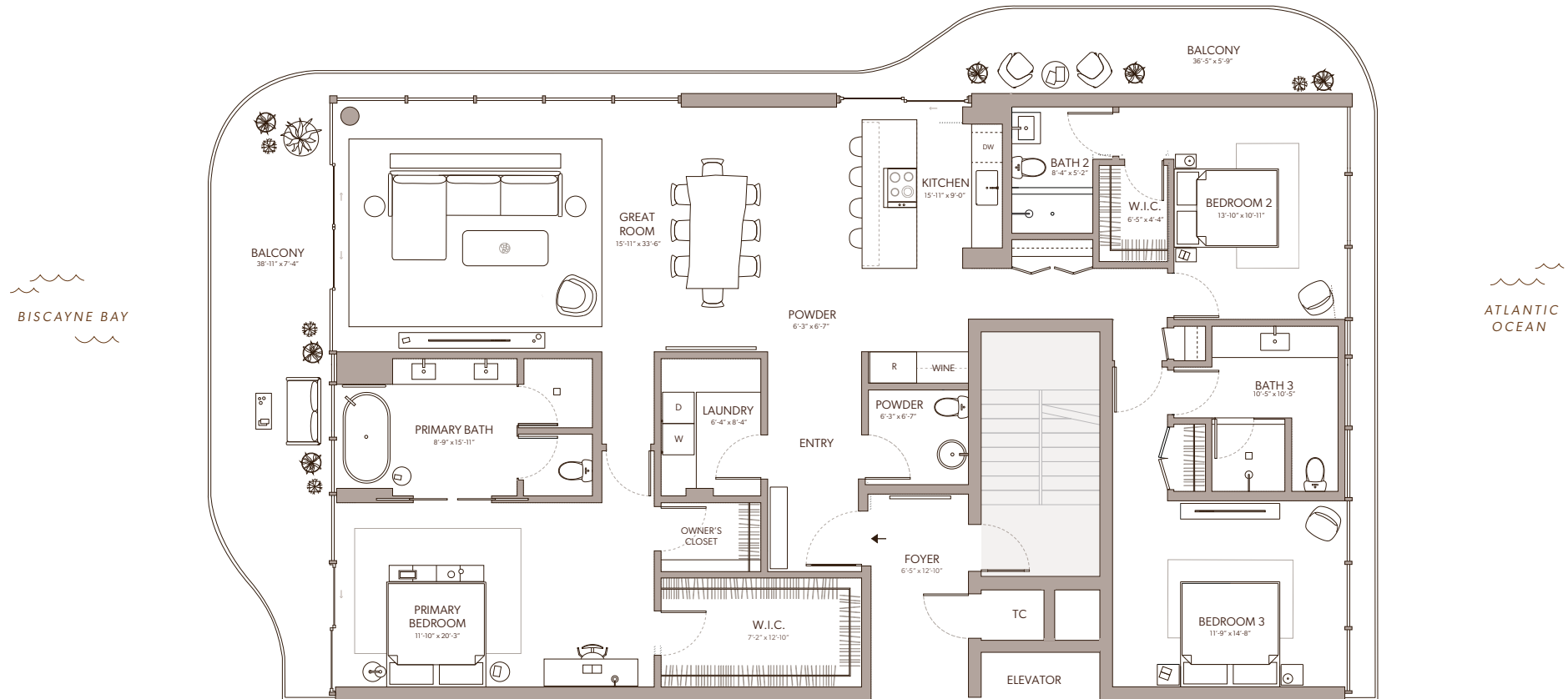
TWENTY-NINE INDIAN CREEK

2901 Indian Creek Drive

Indian Creek Drive



29th Street



BISCAYNE BAY

ATLANTIC OCEAN

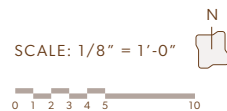
3B

3 BEDROOM | 3.5 BATHROOM

Interior: 2,301 sq ft | 701 sq m

Balcony: 517 sq ft | 158 sq m

Total: 2,848 sq ft | 868 sq m

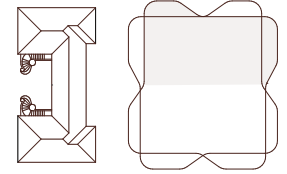


Sketches and illustrations are artist's renderings. Details and field variations are subject to change. All dimensions are approximate and all floor plans and development plans are subject to change. There are various methods for calculating the total square footage of a condominium unit, and depending on the method of calculation, the quoted square footage of a condominium unit may vary by more than a nominal amount. The dimensions stated in this brochure are measured to the exterior boundaries of the exterior walls and the centerline of interior demising walls and, in fact, are larger than the dimensions of the "Unit" as defined in the Declaration of Condominium for 2901 IC CONDOMINIUM which is measured using interior measurements. Interior square footage calculation includes the Foyer which is a Limited Common Element to the specified Unit.

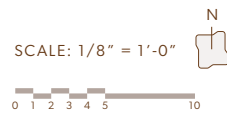
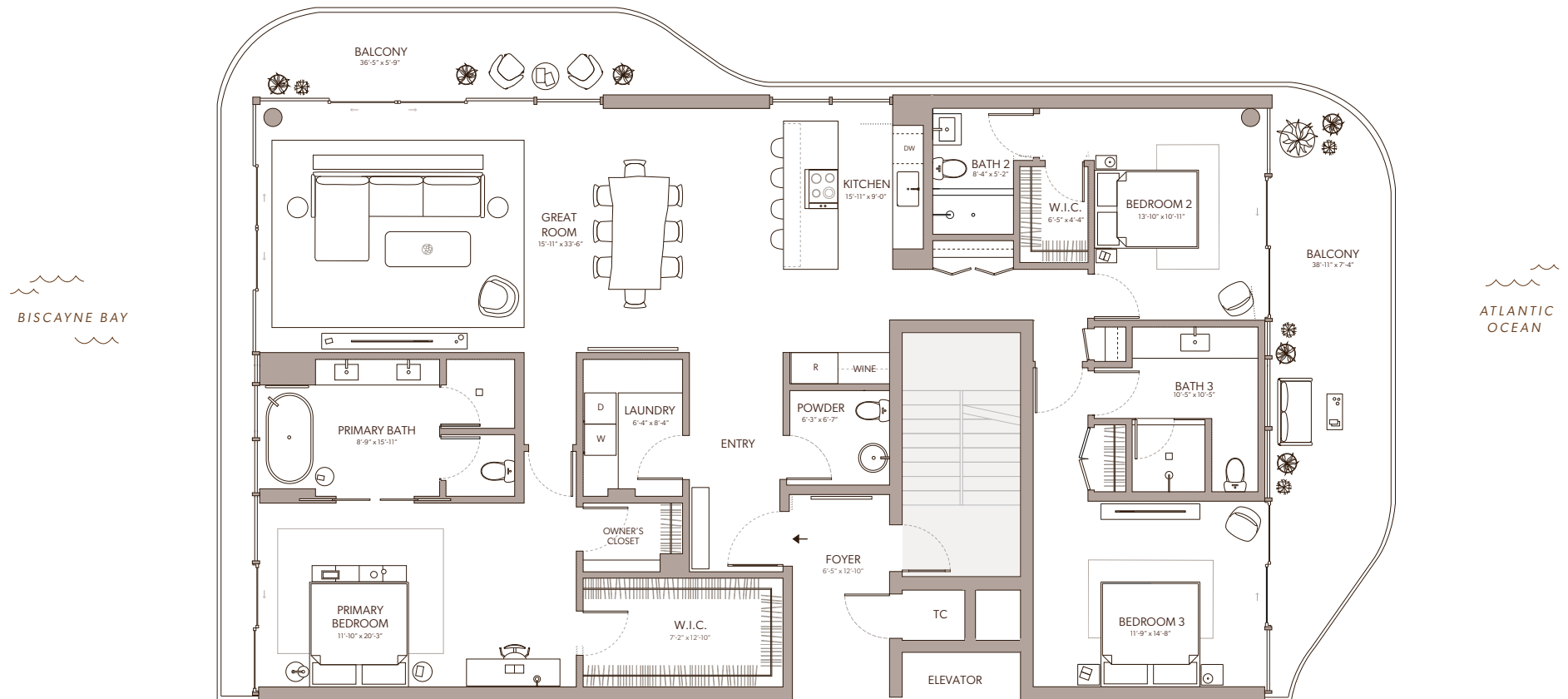
TWENTY-NINE INDIAN CREEK

2901 Indian Creek Drive

Indian Creek Drive



29th Street



4B

3 BEDROOM | 3.5 BATHROOM

Interior: 2,301 sq ft | 214 sq m

Balcony: 517 sq ft | 48 sq m

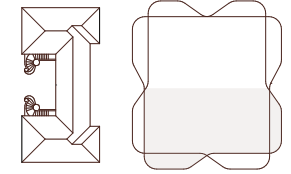
Total: 2,818 sq ft | 262 sq m

Sketches and illustrations are artist's renderings. Details and field variations are subject to change. All dimensions are approximate and all floor plans and development plans are subject to change. There are various methods for calculating the total square footage of a condominium unit, and depending on the method of calculation, the quoted square footage of a condominium unit may vary by more than a nominal amount. The dimensions stated in this brochure are measured to the exterior boundaries of the exterior walls and the centerline of interior demising walls and, in fact, are larger than the dimensions of the "Unit" as defined in the Declaration of Condominium for 2901 IC CONDOMINIUM which is measured using interior measurements. Interior square footage calculation includes the Foyer which is a Limited Common Element to the specified Unit.

TWENTY-NINE INDIAN CREEK

2901 Indian Creek Drive

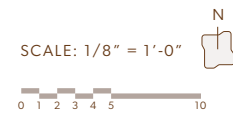
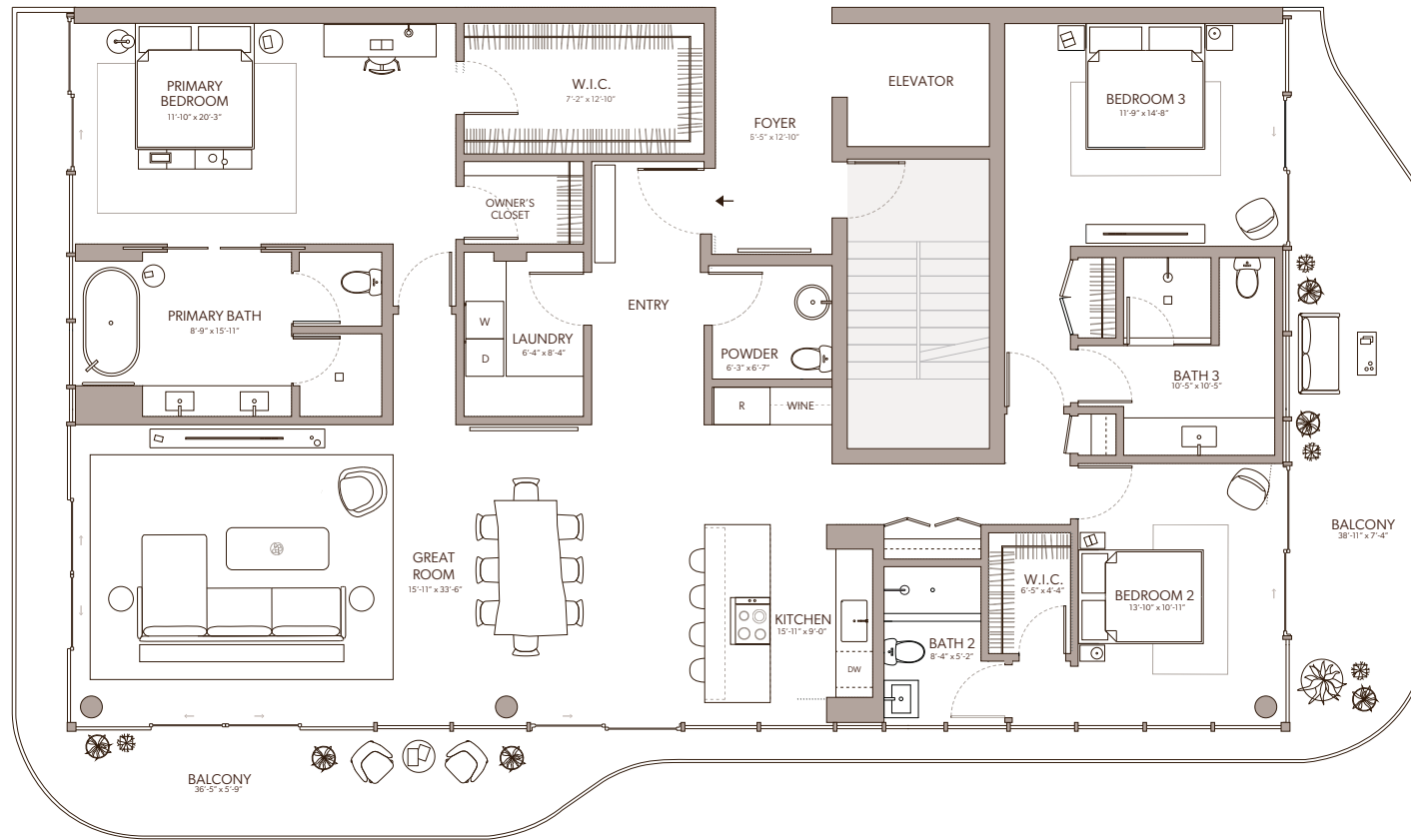
Indian Creek Drive



29th Street

BISCAYNE BAY

ATLANTIC OCEAN



5A

3 BEDROOM | 3.5 BATHROOM

Interior: 2,301 sq ft | 214 sq m

Balcony: 564 sq ft | 52 sq m

Total: 2,865 sq ft | 266 sq m

Sketches and illustrations are artist's renderings. Details and field variations are subject to change. All dimensions are approximate and all floor plans and development plans are subject to change. There are various methods for calculating the total square footage of a condominium unit, and depending on the method of calculation, the quoted square footage of a condominium unit may vary by more than a nominal amount. The dimensions stated in this brochure are measured to the exterior boundaries of the exterior walls and the centerline of interior demising walls and, in fact, are larger than the dimensions of the "Unit" as defined in the Declaration of Condominium for 2901 IC CONDOMINIUM which is measured using interior measurements. Interior square footage calculation includes the Foyer which is a Limited Common Element to the specified Unit.

TWENTY-NINE
INDIAN CREEK

THE PENTHOUSE

1 PENTHOUSE

8 RESIDENCES

Floors 3 - 6

2 TOWNHOMES

TWENTY-NINE
INDIAN CREEK



PENTHOUSE GREAT ROOM

TWENTY-NINE
INDIAN CREEK

THE TOWNHOMES



TWENTY-NINE
INDIAN CREEK



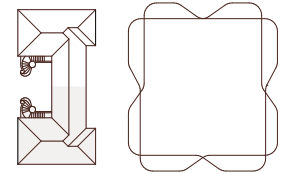
TOWNHOME GREAT ROOM

Sketches and illustrations are artist's renderings. Details and field variations are subject to change.

TWENTY-NINE INDIAN CREEK

2901 Indian Creek Drive

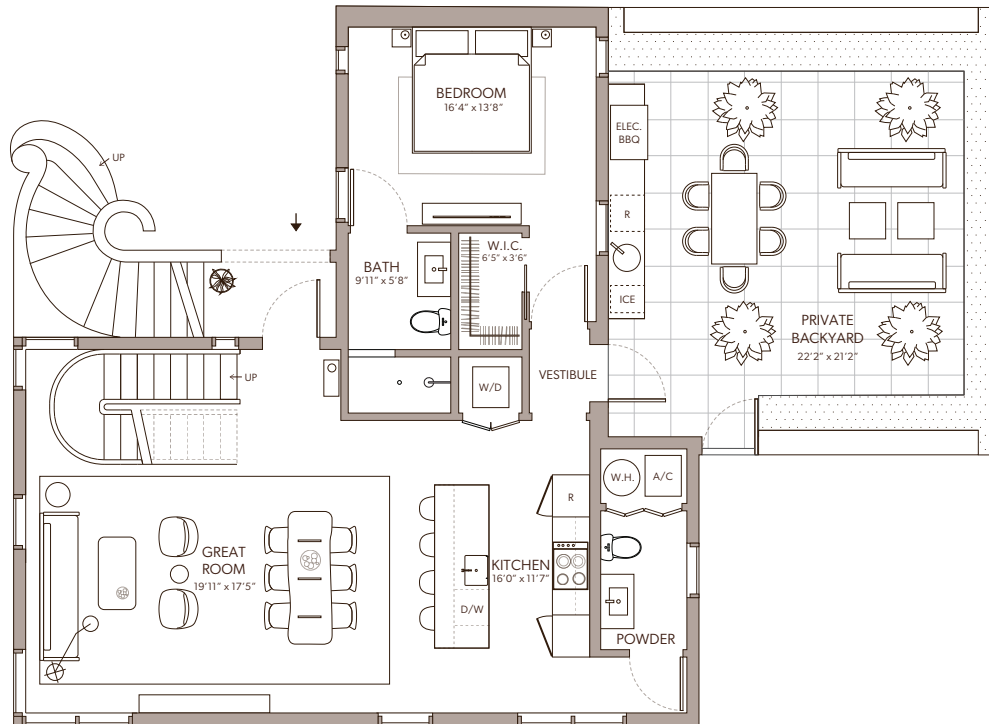
Indian Creek Drive



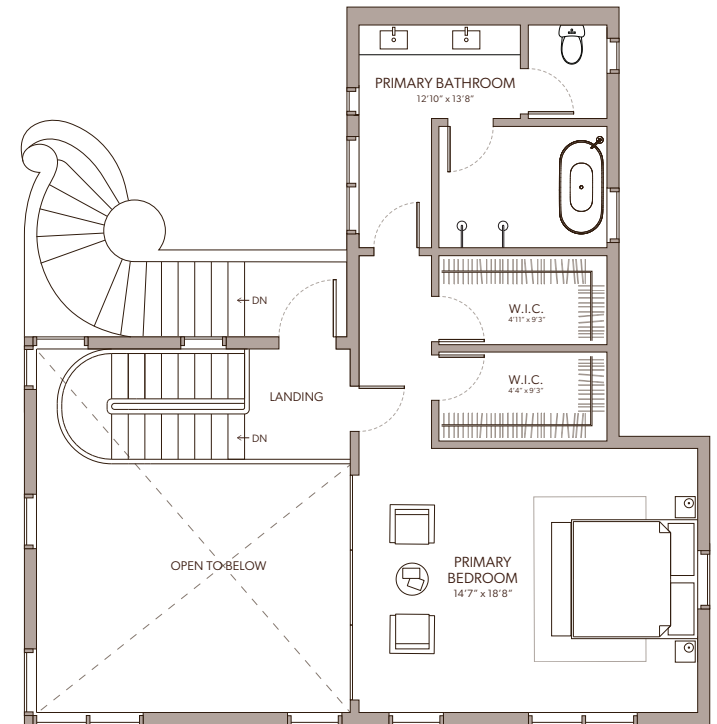
29th Street



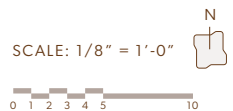
BISCAYNE BAY



GROUND FLOOR



SECOND FLOOR



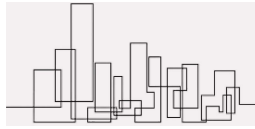
THB

2 BEDROOM | 2.5 BATHROOM

Interior: 1,750 sq ft | 163 sq m
Private Terrace: 500 sq ft | 46 sq m
Total: 2,250 sq ft | 209 sq m

Sketches and illustrations are artist's renderings. Details and field variations are subject to change. All dimensions are approximate and all floor plans and development plans are subject to change. There are various methods for calculating the total square footage of a condominium unit, and depending on the method of calculation, the quoted square footage of a condominium unit may vary by more than a nominal amount. The dimensions stated in this brochure are measured to the exterior boundaries of the exterior walls and the centerline of interior demising walls and, in fact, are larger than the dimensions of the "Unit" as defined in the Declaration of Condominium for 2901 IC CONDOMINIUM which is measured using interior measurements. Interior square footage calculation includes the Foyer which is a Limited Common Element to the specified Unit.

TWENTY-NINE INDIAN CREEK



JMH DEVELOPMENT

DEVELOPER

JMH Development is a leading, full-service real estate development company with experience as developer or owner of major residential and commercial properties across the U.S. With an innovative approach to creating distinctive properties in the luxury category, JMH has been a pioneer in the development of the most unique and well positioned properties in highly desirable markets like Manhattan, Brooklyn and Miami Beach.



URBAN ROBOT ASSOCIATES

ARCHITECT/INTERIOR/LANDSCAPE

Urban Robot is full service design collective located in Miami Beach, specializing in architecture, interior design, landscape architecture and urban design. The team works collaboratively to develop a multidisciplinary approach to all projects to bring about a unique vision and create experiences that are meaningful, memorable, and functional. Whether a dynamic food hall, mixed-use complex, a boutique hotel, precious natural resource, or a brand identity -- UR strives to elevate the human experience. The firm draws upon on its team's diverse design backgrounds to bring about singular narratives that are true to concept and tailored to each project. We endeavor to tell stories by making places.

BUILDER

Established in 1998, Thornton Construction Company is a contracting and construction management firm headquartered in Miami. Their dedicated team specializing in commercial and residential construction offers personalized, professional service with an efficient and timely approach that preserves quality.



SALES

A global award-winning realtor with deep connections to the Miami and South Florida real estate landscape, Laura has become THE "go-to" realtor in the residential real estate market. She is a leader in her field with a reputation of being fiercely protective of her clients and their interests and needs. Shrewd, astute negotiation skills along with innovative marketing strategies set her apart from others in her field. She has a proven track record with thousands of transactions under her belt and over \$750 Million in sales over the past 23 years. Laura truly cares about her clients and her greatest reward is knowing that many of them have become life long friends. Contact Laura today at 786-212-1073 or lauragravesrealtor@gmail.com.





29-INDIANCREEK.COM

Sketches and illustrations are artist's renderings. Details and field variations are subject to change. All dimensions are approximate and all floor plans and development plans are subject to change.

There are various methods for calculating the total square footage of a condominium unit, and depending on the method of calculation, the quoted square footage of a condominium unit may vary by more than a nominal amount. The dimensions stated in this brochure are measured to the exterior boundaries of the exterior walls and the centerline of interior demising walls and, in fact, are larger than the dimensions of the "Unit" as defined in the Declaration of Condominium for 2901 IC CONDOMINIUM, which is measured using interior measurements.

ORAL REPRESENTATIONS CANNOT BE RELIED UPON AS CORRECTLY STATING REPRESENTATIONS OF THE SELLER. FOR CORRECT REPRESENTATIONS, MAKE REFERENCE TO THIS BROCHURE AND TO THE DOCUMENTS REQUIRED BY SECTION 718.503, FLORIDA STATUTES TO BE FURNISHED BY A SELLER TO A BUYER OR LESSEE.